



Hayling Island Men's Shed Association

A Charitable Incorporated Organisation (CIO) registered with the Charity Commission, Registered Charity no. 1169439

HIMSA NEWS

Issue 6 December 2018

From the Editor's bench

We are sorry it's been such a long time since the last newsletter, largely because there hadn't been a lot of obvious progress towards getting our workshop building. But now things seem to be moving forward well - we have received planning consent for a temporary building behind the United Reformed Church, and at the time of writing we are obtaining the spec for the base, which we hope we will be able to start work on soon.

So far we have spent £2291 on necessary preparatory work; although our finances are relatively healthy, we do not have enough to buy the building, pay for installation, and fit it out, so we are waiting with baited breath for news of a major grant application. Hopefully it won't be too long before the next issue and more positive news!

DATES FOR YOUR 2019 DIARY

Sat 2nd Feb 7.30 pm Winter Picnic Disco

Thur 21st Feb 2.00 pm Annual General Meeting



Remembering Alan Ball, founder member and a great supporter of everything we did.

Supported by...



Hampshire
County Council



HAYLING HARDWARE



Havant
BOROUGH COUNCIL



...and many other
donations from
members and
friends...
Thank you!

Hi everyone and a Happy Birthday to the Hayling Island Men's Shed. We are 3 years old this month. Sadly still no Shed, BUT, we are closer this year than we were on our last Birthday. 'Why is it taking so long?' I hear you ask. Please don't. There are reasons, too many to list here and we'd like you to read the rest of our newsletter - far more interesting!

We are not alone in a quest for a building. You will see as you read this newsletter that there are 130 Sheds in development. We are one of them, and a lot are in a similar position that we were in when we started - finding a location or a suitable existing building. But we are luckier than most of those 130, as we have our location, thanks to the URC. We have our letter of intent to lease. We have planning consent from HBC. Very soon HBC Building Control approval should be gained, and hopefully by early in the new year will move out the category of 'Sheds in Development' into the 'Sheds Open' category.

That will be when the fun and the work really starts. We will have a shell of a building. How big will the workshop area be? Where will the benches go? What equipment and tools have we got, and what do we need to buy? How much space will be left for the quiet area? What are we going to do in that area? What will we need in the quiet area? Where will the kitchen go and what do we need in it? Questions, questions, and more questions that will need a lot of discussion and decision making.

Looking back at my last AGM report, I spoke of the future and the long term success of our Shed. I said, 'Shed success equals Shed autonomy'. That means choices and decisions made by yourselves, not by us who sit at the table in front of you each week. Ideas need to be explored and decisions made: on how the Shed is run; the sort of activities we do or want to do, individually, for the Shed or for the community; financial governance; effective daily stewarding; social events; the list goes on.

I know you all want this Shed because you turn up each week, buy a raffle ticket for something you don't really need, pay a subscription to something we don't have, and listen to, mainly me, waffling on. And you have been doing it for the last 3 years. If that's not commitment I don't know what is. So here's what I want. I'd like to hear from YOU, YOUR ideas about how we run our Shed once we've got it. ANY IDEAS! Health and safety, daily stewarding, cleaning, kitchen supplies, opening and closing, anything that comes to mind. Sensible or wacky. I'd like it if you'd put your ideas on paper rather than tell me. I'll collate them and we will discuss them at one of our meetings. Let's do it NOW, so when we have our Shed we will have a good idea of what we need to put in place to get it functioning.

FAILING TO PREPARE IS PREPARING TO FAIL

I'd like to end my chairman's ramblings with some thank you's.

Firstly, to our Lady Honorary Member, Judy Clark, for all her extremely hard work in helping to get us where we are now. Not only getting plans drawn and presented to the Council but getting them before the Synod Trust and continually badgering them for action on their part. I think most of Judy's year has been taken up with work on our behalf. Even when on holiday. I know there are still things you are working on Judy, but please do take Christmas off! Seriously, thank you Judy. We are truly indebted to you and I hope next year will be a lot quieter for you.

Next, thank you to all the members of South Hayling URC who have continued to support us in our endeavours. Without them we could still be looking for somewhere to put down our roots.

A big thank you the team. To Tony, I'm sure his secretarial file is getting bigger each week. To Roy, for not only keeping our money in order but also for producing another brilliant newsletter. To Ron for the work he has put in negotiating with the company supplying our building. To Tim, for standing in for me during my time of absence, running the meetings and now making sure we have a cuppa each week.

Finally my thanks go to you, the members. You have been so patient and so supportive. Whether it's bench refurbishing, post box making, van maintenance, doing little jobs for others in the community, supporting social events or just turning up each week for our meetings, without you there wouldn't be a Men's Shed on Hayling Island and I would have to find something else to do on a Thursday afternoon. THANK YOU.

Timeline to a Shed

MARCH: It became clear from Building Control that it was not going to be feasible to have a wooden building due to fire requirements. Decided on a steel building.

APRIL: Building design agreed with church. Quotes sought.

MAY: Helpful face-to-face meeting with Synod Trust and Havant Building Control.

JUNE: 1m test hole dug. Decided on building supplier.

JULY: Building Control assessed ground conditions based on test hole.

AUGUST: Letter of Intent received from Synod Trust. Discussions with Planning Dept. Planning application submitted.

SEPTEMBER: Work to deal with comments from Environmental Health Dept, especially on noise.

OCTOBER: Temporary Planning permission received. Structural calculations for base spec commissioned.

NOVEMBER: Base spec being finalised. and then approved by Building Control. Site preparation to commence.

To be continued.... !

Steel Building design: 15.4m long, 6.0m wide, 2.5m high, 3.14m at apex. 8 skylights in roof. 1 double door main entrance, 2 single doors on side adjacent to church.



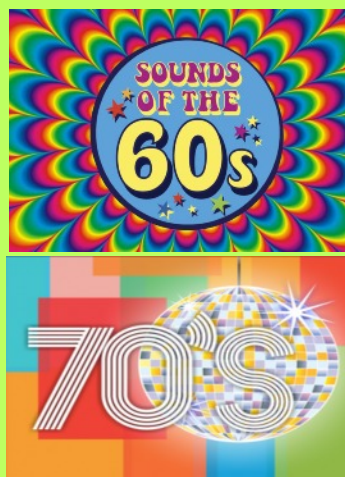
Don't miss our **Winter Picnic Disco** evening at the URC main hall on Saturday 2nd February from 7.30 pm. The evening will include a 60s/70s disco, and if we're really lucky we might be treated to some live musicians too!

Tickets are just £7.50, which includes soup. Bring your own food and drink, and enjoy a sociable and entertaining evening. Tables and chairs will be provided for those who don't want to sit on a blanket!

Could you donate a raffle prize (or persuade a local business to donate one)?



Tony and Roy at last year's event



Our condolences to the family of Tony Higham who died recently. His words of wisdom will be much missed.



We now have our own branded shirts - T-shirts, polos and sweatshirts. Please contact Tony for any orders or queries.

Hayling Island



We all learnt a lot when we had a very interesting visit from Dr Carolyn Popham, chairwoman of the Dementia Friendly Hayling Island steering group, to talk about Dementia Awareness. As we get older this is a subject which could impact many of us in one way or another.

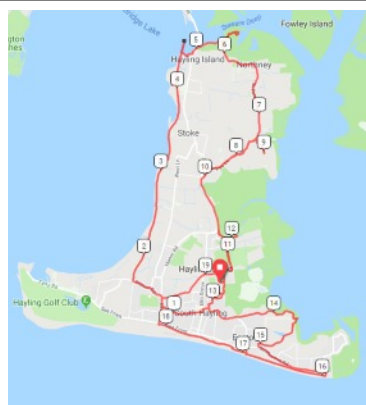


We were asked to undertake a major project to renovate public benches across the island. A grant from Hampshire County Council covers the cost of materials and of running the van to get to the many locations. The work so far has been done mostly by John and Robin, but I'm sure they would welcome help from others. The pictures show 'before' and 'after' for one bench on the Sea Front.



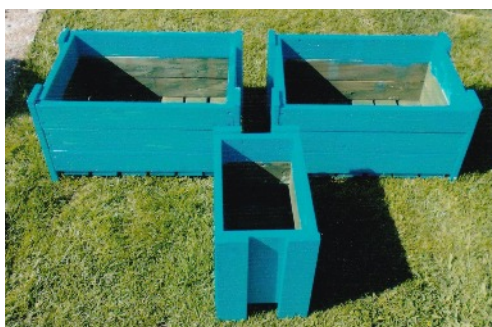
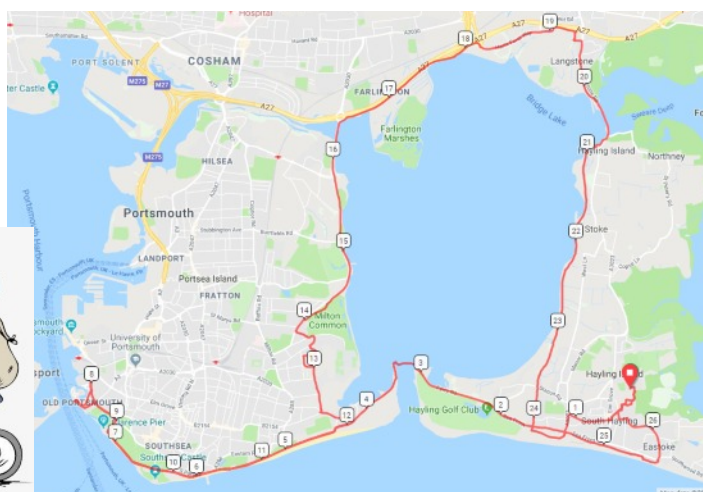
Our van, which serves as a great mobile advert for the Shed, has recently been serviced and given its MoT courtesy of Hayling Garage. And they have kindly offered HIMSMA members 10% discount on car services.

The van has been well used on various jobs this year and for the bench renovation project. Our thanks to Robin who acts as our transport manager, and to Gerry who tore out a few hairs getting the insurance organised.



We have a great little cycling section within the Shed membership. Our first ride was a tour round the island, up the Billy Trail, through Northney to Meadow Farm Tea Rooms for a lunch break, then down through Eastoke to Sandy Point before returning to the starting point at the church.

The second outing was even more ambitious, over the ferry to Southsea and Portsmouth, then back around the top of Langstone Harbour. Tony says "We juggled destination and route to satisfy participants, some did more than others but their secret is safe with me!"



John Moore sprang into action when we had a request from a local single mum to produce something to brighten up her small garden. He constructed these planters, for which she was very grateful.

Although we didn't receive enough votes to win a major grant from the Aviva Community Fund this time, we were pleased to receive a £100 'consolation prize'.



During the past year members have been raising funds through a wide variety of different 'little jobs' for members of the community.

Altogether these activities have raised an amazing £405 so far this year, so well done and thank you to those concerned for your hard work.

Thanks too to Barry for organising the sale of a model railway donated to us, which has so far brought in £224.

Co-op Community Fund

We were chosen as one of three local recipients to share the proceeds of the Community Fund from the Selsmore Road store and also from F A Holland (East Wittering) Funeralcare, until October.



We have just received our final payment from Co-op, taking the total to an amazing £1404, so thank you to everyone who nominated HIMSA as their chosen charity. Our thanks to the local store for laying on a celebration event on 24 November. Nationally, the Co-op donated an impressive £19 million for local charities this year.

We again had a stall at the Lions' Donkey Derby, and raised £121 from a tombola and miscellaneous sales. Our thanks to all who helped.

We are very grateful for customer donations totalling £84 this year from the collecting box at the white ice cream / coffee van (at the sea front car park opposite Sea Grove Avenue). Thanks to John for organising this.

Santa's out again!



This year the Hayling Lions members are going out collecting with Santa's sleigh each night, but would welcome help that anyone can provide.

Please let Ron Harman know if you could go out one evening with a collecting bucket.

TWAM

A reminder about Tools With A Mission, who collect, sort, refurbish and distribute tools and other items to partner organisations in Africa. When we have a workshop we may well be able to assist in some way. In the meantime, if you have any tools suitable for them, please ring their local contact Harry Wilkinson on 02392 363246, or email harryw@twam.uk.

We know that several of our long-standing members are not so well at the moment.

We do miss you at our meetings, and hope you will be able to get involved again soon. Thank you for your continued support, and do keep in touch!

HIMSA TRUSTEES

Chairman: Gerry Johnson
Vice Chairman: Tim Norgate
Secretary: Tony George
Treasurer: Roy Cadoux
Project Manager: Ron Harman

Newsletter: Roy Cadoux

Our website: himsa.co.uk

Contact us: info@himsa.co.uk
07887 800932

Weekly meetings

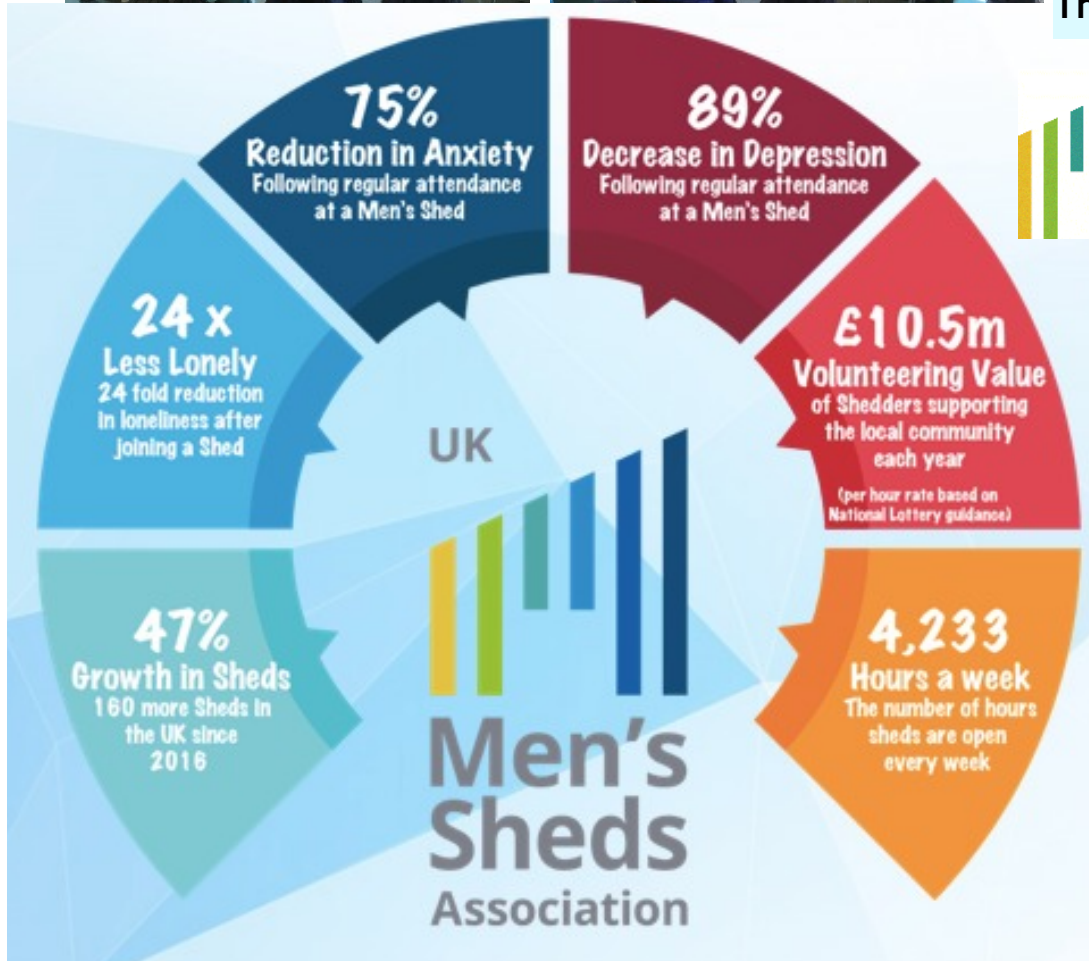
We meet on Thursdays at 2pm at South Hayling United Reformed Church small hall. The address is Hollow Lane, PO11 9EY (opposite Sainsburys).

Everyone is welcome to come and have a cuppa and find out what we are up to - but hopefully before too long we will be getting out of the meeting room and doing some actual work in preparation of our shed building.

We are grateful to the URC for continuing to allow us to meet there each week.



Note that our last 2018 meeting will be on 13 December. We restart after the Christmas break on Thurs 10 Jan.



From the UK Men's Sheds Association website
menssheds.org.uk

There are now 470 Sheds open in the UK, with another 130 in development. The number of Sheds had grown by 47% in just two years.

The diagrams (left) illustrate some of the benefits of Men's Sheds.



Curry Evening

We held a second curry evening in March at the Gandhi Restaurant in Hollow Lane earlier this year, and we were very grateful to receive a £100 donation to the Shed from the restaurant. Thank you Josh!



Membership Subscriptions

Subs for 2019 can now be paid. If you have already set up a standing order, you don't need to do anything. Otherwise please bring or send your contribution (the suggested amount is currently £15), cash or cheque payable to HIMSA, to our Treasurer Roy Cadoux.

If you have not already signed up for Gift Aid, please do consider filling in our simple form so we can get an extra 25% from HMRC. (You do need to be an Income Tax payer.) We have just received £82.50 from this source for 2018.

We welcome Judy Clark as our first Honorary Member, in recognition of all she has done so far (and we hope will continue to do!) to help us get our Shed building up.

- A big welcome to the new members who have joined us in recent months.
- We've said it before, but we do hope soon to have a new look website - have a look at www.himsa.co.uk
- We have a donation button on the front page of the website, thanks to BT MyDonate. All donations go to our bank account without deduction.

We shall say zis only once...



In October we held a very successful joint fund-raising evening with South Hayling URC (the planning was done by a joint group and we split the proceeds 50/50).

We all had a very enjoyable time, some lovely food, and the evening gave us £273 towards our funds.



Working together to provide a Men's Shed workshop on the Island



Shed helps Penpal scheme

One of our local Councillors, Issy Scott, approached the Shed recently with a request to produce five postboxes, one for each of the Hayling schools. They will be used for a penpal scheme that Issy is setting up, to encourage letter writing between the children and care home residents on the island.

We are very grateful to Barry Saddington who took up the challenge and did a brilliant job constructing the boxes.

We had 24 members present at the recent meeting when we were able to present the postboxes to Issy.



Every down has an up

Tony George, HIMS Secretary

2018 has been another challenging year for HIMS. As you will have read elsewhere we said a permanent farewell to Alan Ball, an energetic little package who worked hard in our early days to create a viable and permanent Men's Shed. His legacy lives on in the shape of our logo and the items he created for us. A few other members have been less able to attend throughout the year for various reasons and our thoughts are with you. One of the reasons for the Shed's existence is to provide companionship and support to each other during difficult times, and the fact that even without a shed we get together in the numbers that we do means that this aim is being reached.

However not all is doom and gloom. We have gained new members throughout the year, and offer you all a warm welcome. I hope this will continue and that as we get ever closer to a proper workshop, the news spreads and we gain even more interest and members.

I persuaded some of you to join me out cycling to enjoy the fresh air and get some exercise. Oh, ok then, to drink coffee and eat cake. Well, you have to have a pit stop to refuel, don't you? By necessity this will be a sporadic activity but we hope it will continue with one or two more joining in on occasions.

My visits to other sheds have continued, and these little groups within groups occur quite often. Southbourne has a model railway group, the Isle of Wight has a music shed and all have workshop activities that involve wood and metal along with the purely social membership. Proof indeed that a shed is what you make of it and not just the building it's in.

Well at least all this has kept me (mostly) out of trouble on Thursdays!